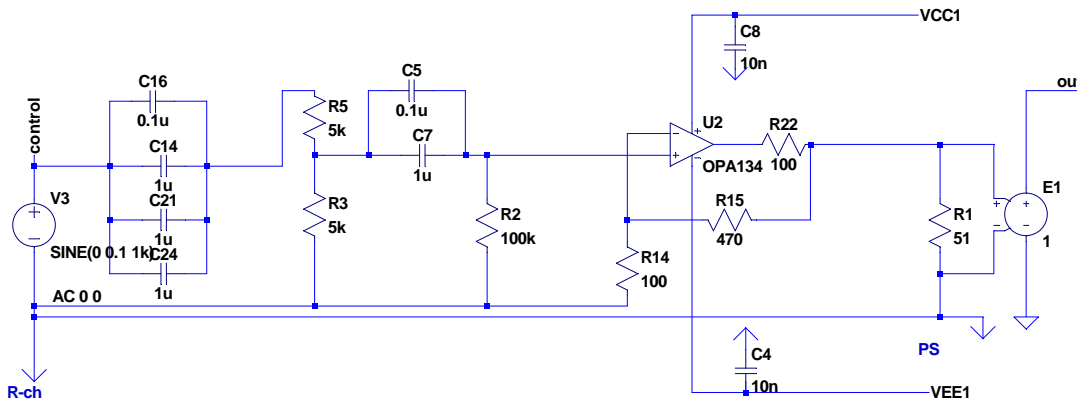
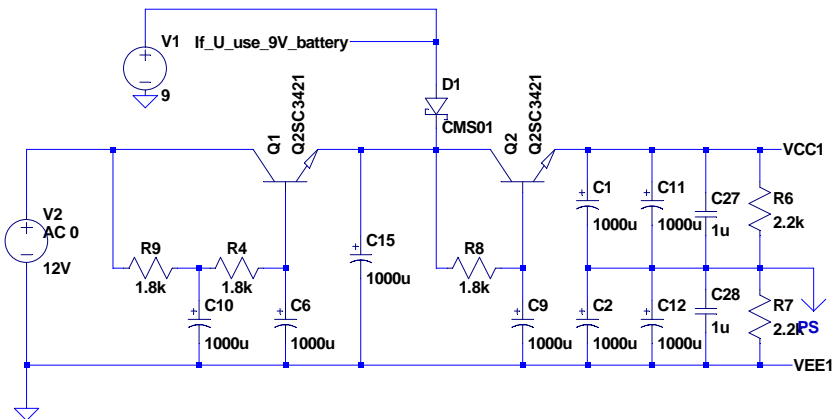
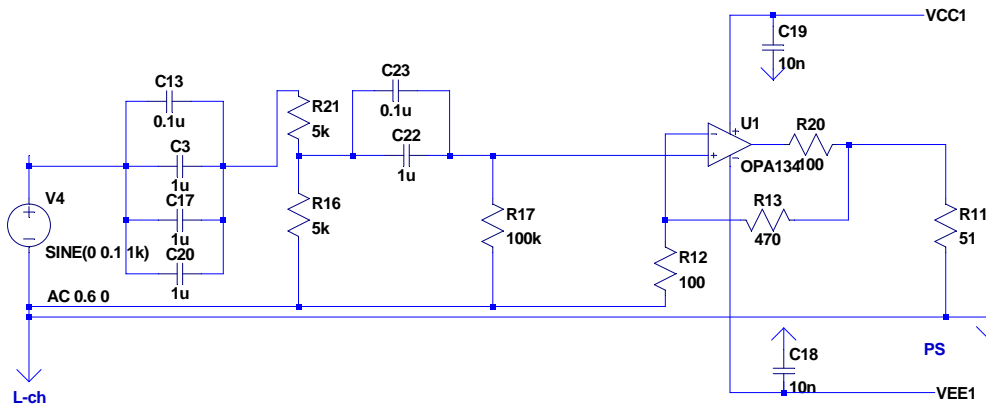


skeishi_amp 11.11.23 minnt

R9,4,8,6,7 are carbon resiter
 others resisters are Nikkohm RP-24C
 c13,16,23,5 Panasonic ECHU1H104GX9
 C7,22 1uF 100V Arcotronics R82EC4100AA70J or Shizuki VF63Z106JAB
 C27,C28 1uF 100V Arcotronics R82EC4100AA70J or SANYO OS-CON 16SL10M
 C3,17,20,14,21,24 1uF 100V Arcotronics R82EC4100AA70J or Panasonic ECQE2 335KF x2
 C4,C8,C18,C19 10nF 100V Arcotronics R82EC2100DQ50J or shizuki VF63Z103JAB
 1000uF 25V are all Rubicon YK



```

;tran 0 40m 20m {20m/65536} .lib toragi.lib
.options plotwinsize=0
.ac dec 10 10 100Meg
.four 1kHz v(out)
.model SC1815 ako:QC1815 (Bf=250.0)
.model SA1015 ako:QA1015 (Bf=250.0)
.model SC1815 ako:Q2PD601AR (Bf=250.0)
.model SA1015 ako:Q2PB709AR (Bf=250.0)
.model SC1815 ako:qbc547C (Bf=250.0)
.model SA1015 ako:qbc557C (Bf=250.0)
.inc njm2114_2_hc.lib
.lib 2sk170.lib
.model CMS01 D(
+ IS=6.18e-6 RS=1.481e-2 N=.9579 TNOM=25
+ Vpk=30 lave=3 mfg=Toshiba type=schottky)
.lib 2SC3421_A1358.lib

```