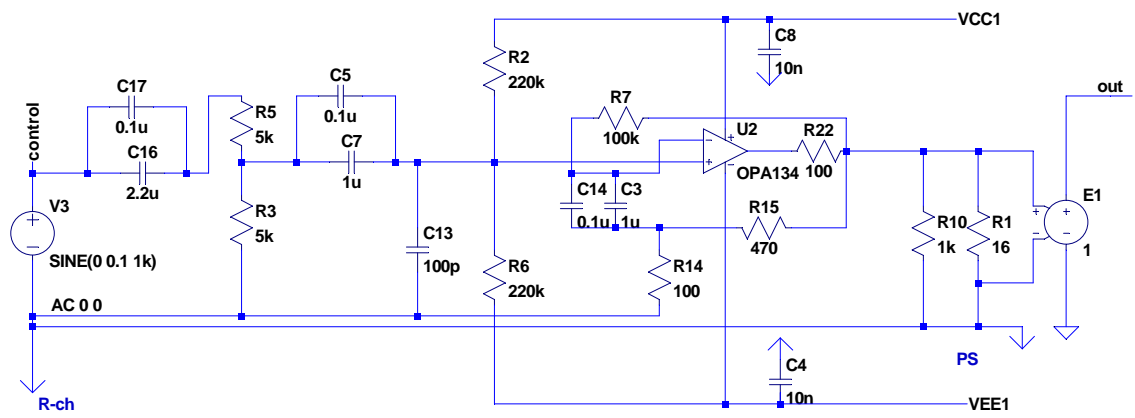
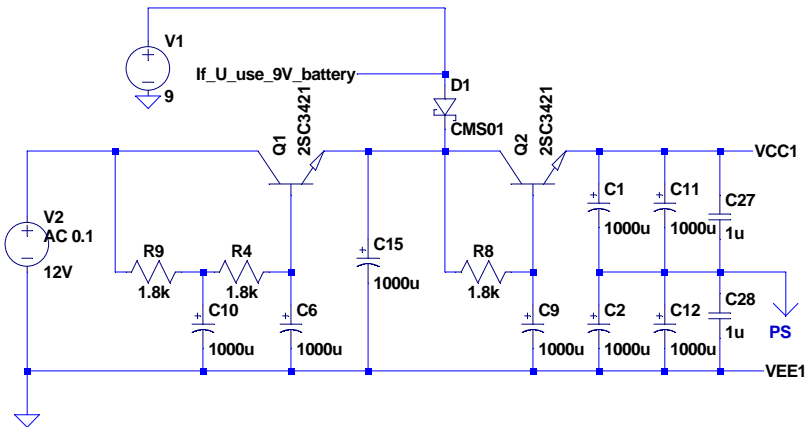
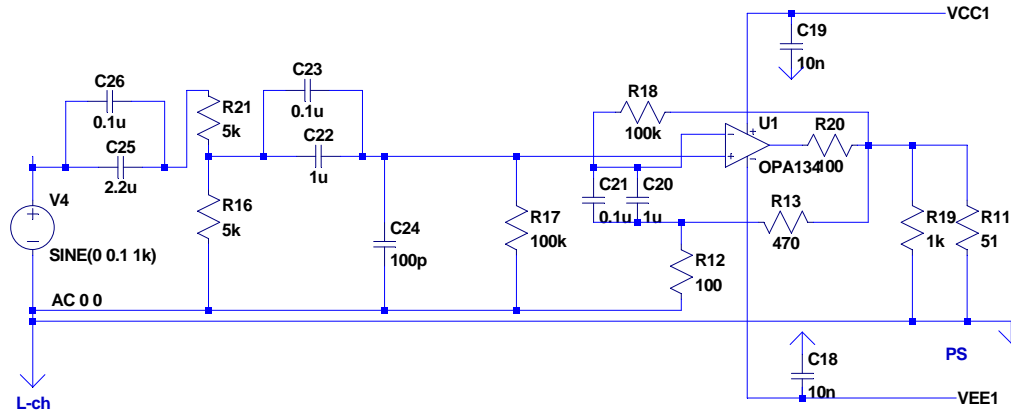


skeishi_amp 11.10.27 minnt
skeishi_amp 11.10.28 hiro

R17,18,12,13,19 R7,14,15,10 Nikkohm RP-24
c26,23,21,17,5,3 Panasonic ECHU1H104GX9



```

;tran 0 40m 20m {20m/65536} .lib toragi.lib
.options plotwinsize=0
.ac dec 10 10 100Meg
.four 1khz v(out)
.lib njm2114_2.lib
.lib njm2043.lib
.lib NJM2068_2.lib
.lib opa134.mod
.lib njm4580_2.lib
.lib LME49860.MOD
.model SC1815 ako:QC1815 (Bf=250.0)
.model SA1015 ako:QA1015 (Bf=250.0)
.model SC1815 ako:Q2PD601AR (Bf=250.0)
.model SA1015 ako:Q2PB709AR (Bf=250.0)
.model SC1815 ako:qbc547C (Bf=250.0)
.model SA1015 ako:qbc557C (Bf=250.0)
.inc njm2114_2_hc.lib
.lib 2sk170.lib
.model CMS01 D(
+ IS=6.18e-6 RS=1.481e-2 N=9579 TNOM=25
+ Vpk=30 lave=3 mfg=Toshiba type=schottky)
.lib 2SC3421_A1358.lib

```